

Bounds Green Depot



SPENCER
British Engineering

*“Installation of
a Retractable
Overhead
Contact System
to Road 11”*



OTP working in maintenance shed

250M OF ROCS
INSTALLATION



MARCH 2018 -
DECEMBER 2018

VALUE
£1.7M

BOUNDS
GREEN DEPOT
LONDON



Bounds Green Depot

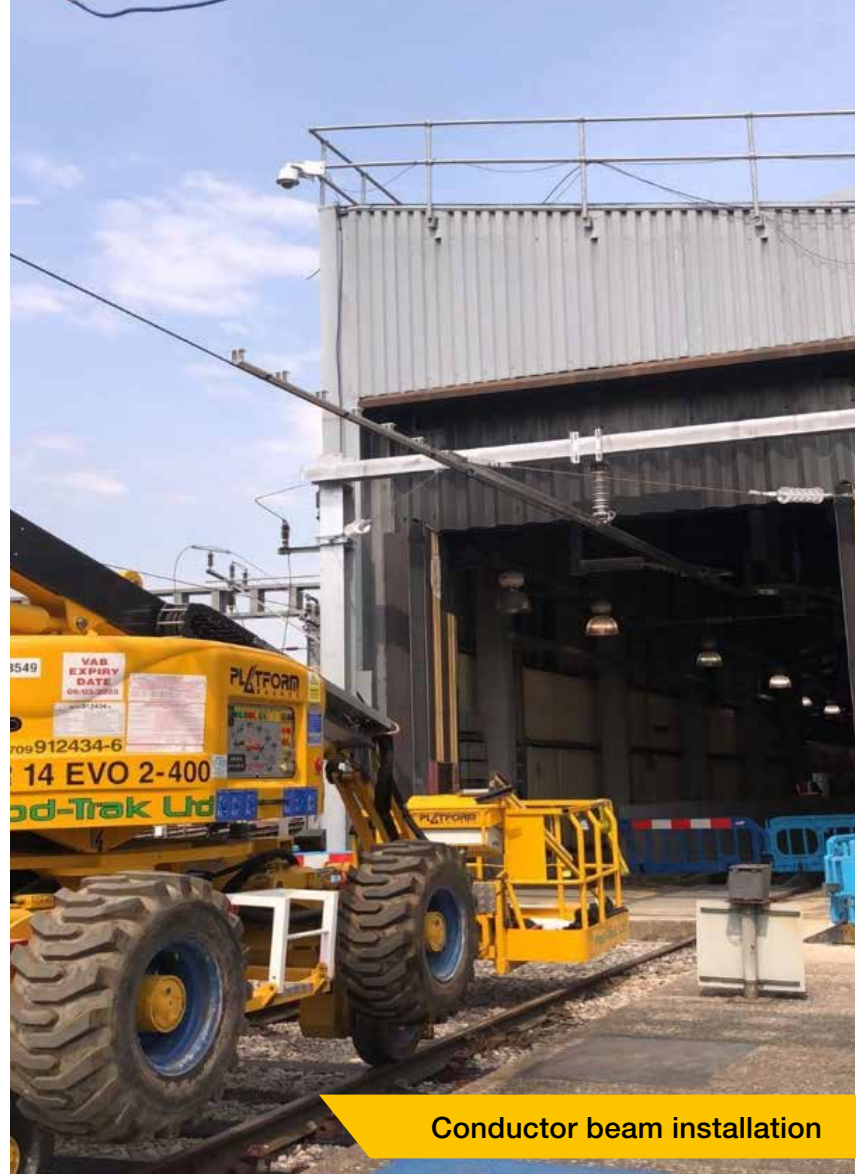


With the introduction of IEP trains to the East Coast Main Line, existing rolling stock maintenance depots require a variety of modifications to allow effective maintenance of the new IEP trains.

At Bounds Green this involved the installation of a crane to enable the maintenance of roof-mounted modules. To facilitate full utilisation of the crane within the depot building, the OLE system had to be modified to allow safe passage along the length of the Depot. As a result the OLE system needed to be retractable. To achieve this the OLE system along Road 11 was re-designed as a Furrer and Frey retractable overhead conductor beam system (ROCS).

The works were delivered in two key stages and had to be completed within the constraints of a four-road live operational maintenance shed for the duration.

Along with the OLE scope Pod-Trak provided OTP to assist with the removal of concrete walkways, installation of an elevated walkway and access requirements for all M&E installations.



Conductor beam installation