



*“The Project saw numerous plain line renewals delivered throughout the South West”*



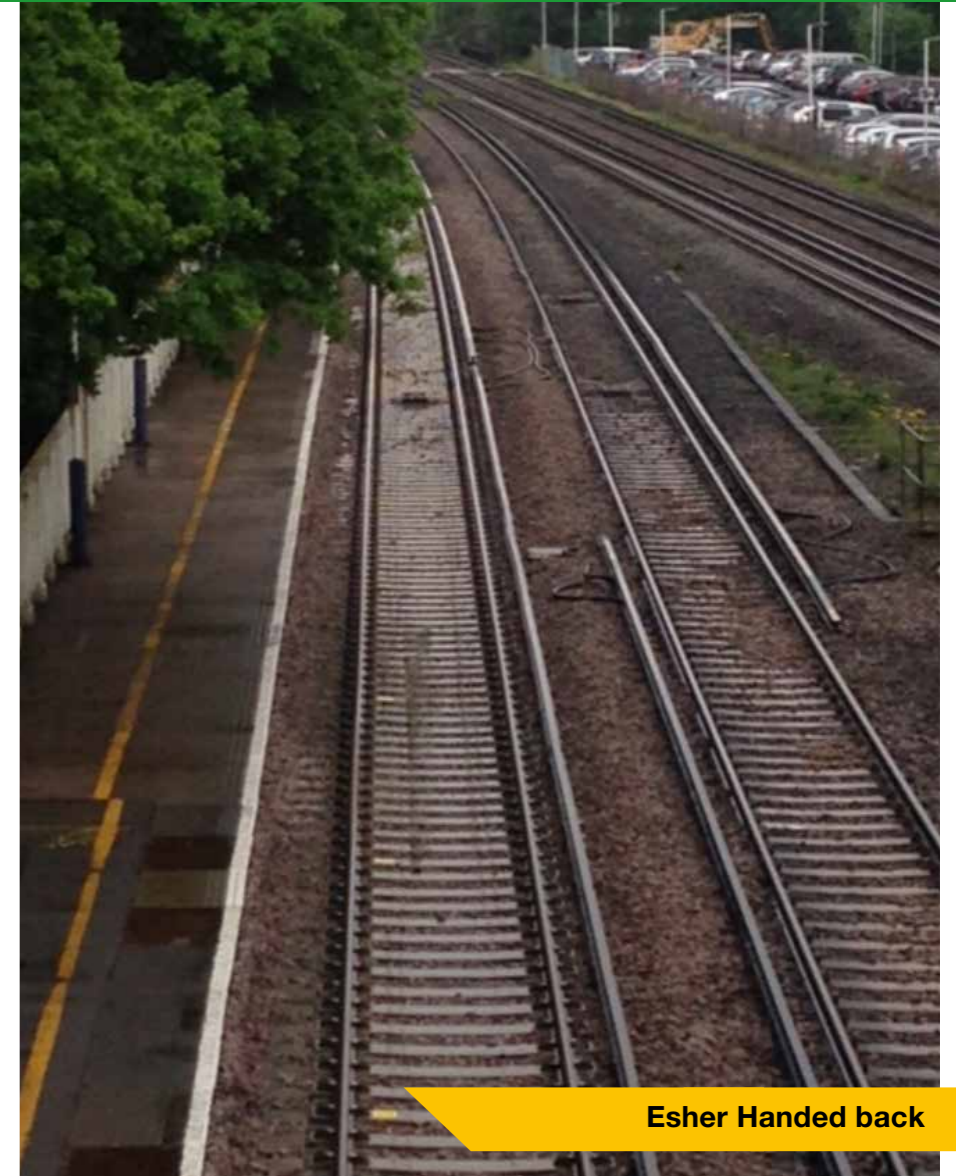
**North Sheen ready for Tamping**

**P**od-Trak were contracted to supply, install and commission all the ETE associated to the CP5 plain line renewals.

CP5 plain line renewals stretched across the South West from Dorset to Greater London, Pod-Trak’s ETE division supported the renewals by installing and commissioning all the associated ETE for each site.

All ETE Materials, Tooling, Labour and Plant were provided by Pod-Trak. The works included the removal of the conductor rail and associated Negative and Positive Electrical Track Equipment. Following the track renewals Pod-Trak installed new Rehau Insulator Supports to the sleeper ends and reinstated the conductor rail. New and/or recovered DC negative and Positive cables were connected and tested.

Due to the existing Conductor rail and associated ETE being reinstated a detailed survey was undertaken at each site to highlight any sub-standard



**Esher Handed back**

WESSEX ROUTE

SEPTEMBER  
2014 - 2017

VALUE  
£2M

VARIOUS 3RD  
RAIL AREAS  
THROUGH-  
OUT THE  
WESSEX  
ROUTE

