

Sandy Station Bedfordshire



SPENCER
British Engineering

“Following two years’ experience on light rail this was Pod-Trak’s first OLE project on Network Rail infrastructure”



MAIN STEEL
NEW HEADSPANS
REGISTRATION
REDUNDANT REMOVALS



APRIL 2012 -
AUGUST 2012

VALUE
£100K

BEDFORDSHIRE



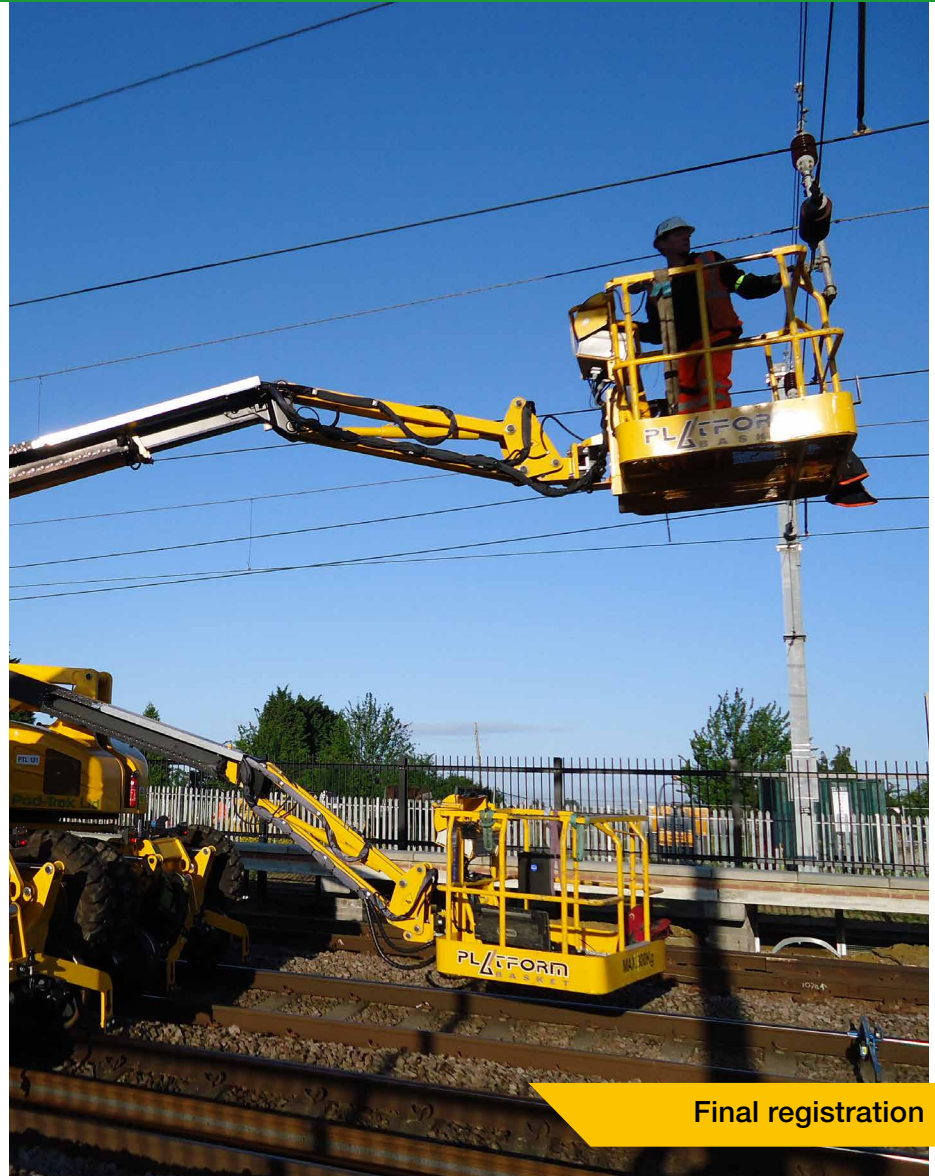
Sandy Station Bedfordshire



The main contract works were carried out by Spencer Group to extend the platforms at Sandy Station in Bedfordshire on the East Coast Mainline. Pod-Trak were subcontracted to carry out all the OLE works necessary to facilitate the platform extensions.

The existing masts on the up slow had to be removed and new masts installed one meter along the track. Both headspans had to be transferred to the new masts while retaining the existing heights and staggers across all four lines.

All works were successfully completed and handed back on time. This was the first OLE project Pod-Trak carried out on Network Rail Infrastructure after many years on light rail projects.



Final registration