

CP5 MFF Anglia Bridges



PERMENANT WAY



Delivering upgrades to Bridges along the Anglia Route”



Caroline Street P/Way Installation complete

**ANGLIA
ROUTE**



**DECEMBER 2017
– JUNE 2019**

**VALUE
£750k**

**LONDON FENCHURCH
STREET TO
SHOEBURYNNESS
(ELR: FSS1)
DEVONPORT
STREET BRIDGE
CAROLINE
STREET BRIDGE
REPTON
STREET BRIDGE**



CP5 MFF Anglia Bridges



PERMENANT WAY

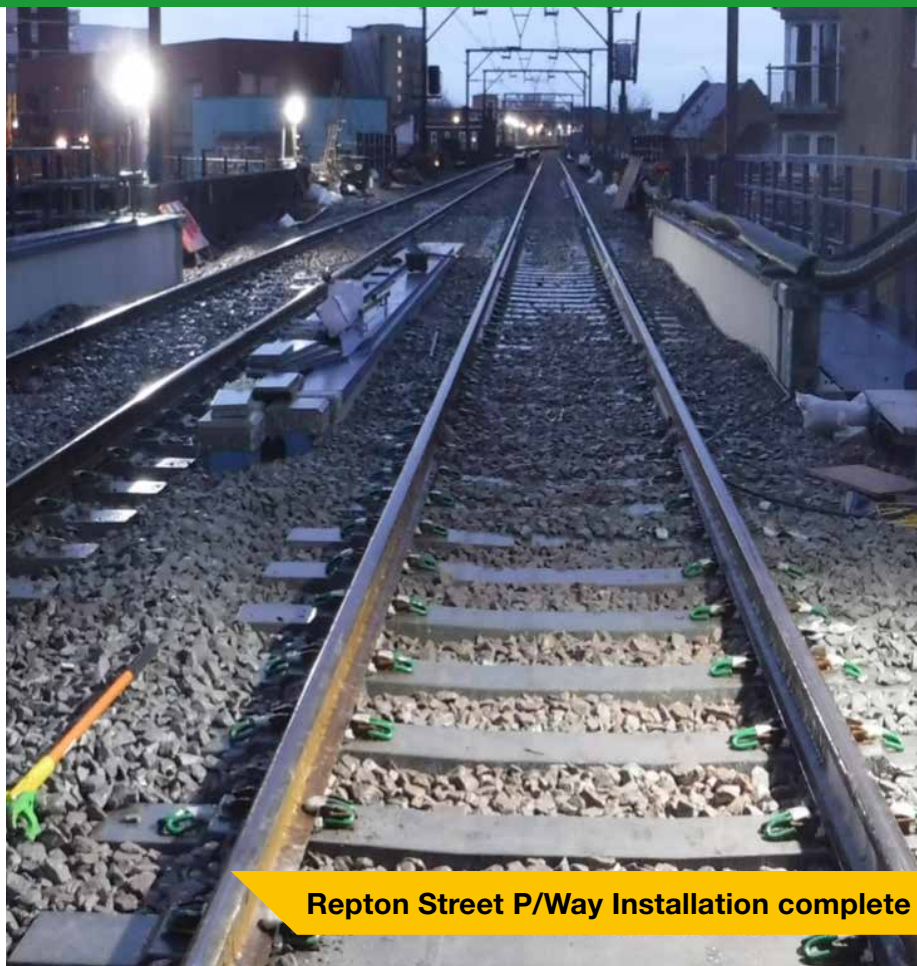
Pod-Trak were contracted to undertake the Permanent Way works in connection with replacement of existing Steel Bridge Decks on Anglia Route.

The bridges involved are rail over road bridges in East London on the Network Rail Line from Fenchurch Street to Shoeburyness.

Pod-Trak, in close collaboration with the client, developed a suitable methodology and programme of work to enable each deck replacement to be achieved within a suitable Possession.

At each structure the existing Track and Formation was removed by Pod-Trak and the site handed over to specialised Contractors for the Deck Replacement works.

On completion of the Bridge Deck Replacement works Pod-Trak installed Back of Wall Drainage, Formation, Sleepers and Rail on these structures integrated with the in-situ infrastructure.



Repton Street P/Way Installation complete

Pod-Trak managed all Rail Welding / Stressing and Tamping works, delivering a high quality finish to relevant Network Rail Standards.

As an integral part of our works Pod-Trak undertook Critical Rail Temperature (CRT) Management and Track Monitoring to ensure the safety of the operational railway.